



POLARISWINDOWS.COM

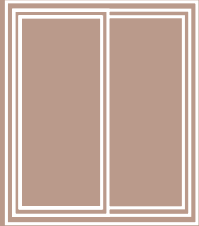


THE *ThermalWeld*<sup>®</sup> COLLECTION  
VINYL PATIO DOOR COLLECTION

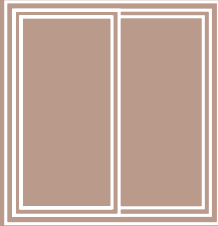
## CUSTOM SIZES

two panel widths - 36" to 94 7/8"  
three panel widths - 95" to 142 7/8"  
max height - 84"

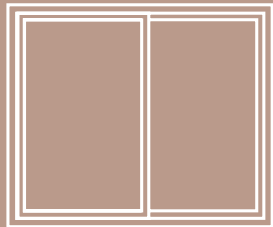
## STANDARD SIZES



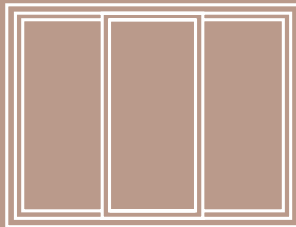
5'0" x 6'8"



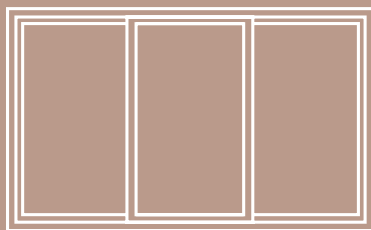
6'0" x 6'8"



8'0" x 6'8"



9'0" x 6'8"



12'0" x 6'8"

## OPEN + SHUT

How would you like your door to operate as viewed from outside?

Two panel - left or right panel glides  
Three panel - center panel glides left or right

**ENERGY EFFICIENCY**  
**EASE OF OPERATION + OWNERSHIP**  
**LIMITED LIFETIME WARRANTY**



## FEATURES + BENEFITS

Fusion welded 4 3/4" frame and sash corners  
Aluminum rebar in interlock stiles and lock stile  
Stainless steel roller track  
Additional lock point with kick lock allows secure partial opening.  
Foam filled main frame extrusions\*  
Door panels interlock and meet at main frame with weather-stripping.  
1"energySMART® Intercept® insulating glass  
Ask about ENERGY STAR® qualified glass package upgrades.

## BENEFITS OF VINYL

Polaris® vinyl formulation retains its smooth surface and color.  
When measuring the rate of heat flow through a patio door; vinyl performs as well or better than framing materials like wood or aluminum.  
Your pristine Polaris patio door will be energy efficient and maintenance free for a lifetime.

## SCREEN

Our extruded aluminum screen frames are stronger than roll formed frames.  
standard fiberglass screen  
*see back for more screen options*

\*options



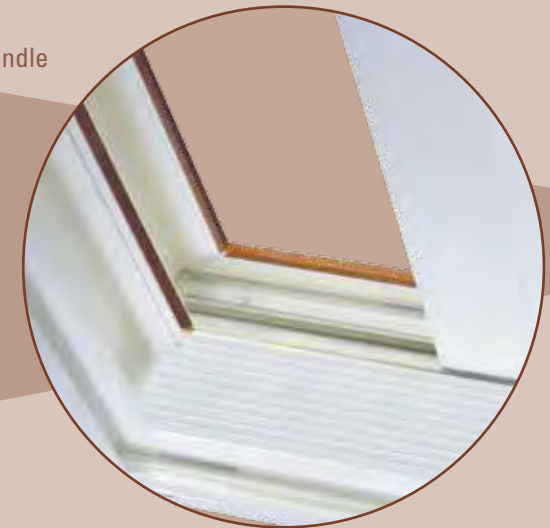
# ThermalWeld<sup>®</sup> VINYL PATIO DOOR



*New* Handle



Handle Set with Key Lock



Threshold



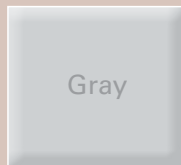
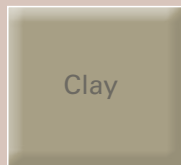
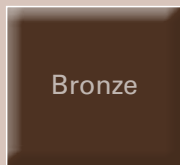
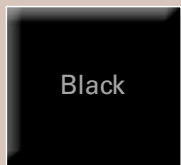
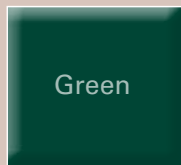
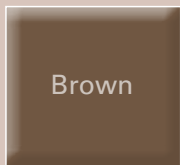
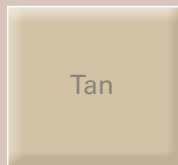
Foot operated dead bolt provides an extra lock point for secure partial opening.



Member

## EXTERIOR PAINT\* 20 YEAR WARRANTY against fading, peeling or blistering

Unique, high-performance exterior coating specially formulated for PVC  
Semi gloss finish • Color matched contour internal grids, caulk & coil<sup>‡</sup> options  
Crack & impact resistant • Touch-up paint included • Lead time 4-6 weeks  
AAMA testing ensures that coating resists strong solvents, heat gain and thermal shock  
<sup>‡</sup> Muntin color may be affected by glass coatings, such as Low-E. Coil not exact match



## DECORATIVE GLASS\*

designs



colonial prairie style double prairie style diamond n/a contour or brasses

internal muntin styles



smooth contour antique brass slim line brass view floral view elongated floral view arch view

## WINDOW & MUNTIN COLORS\*



Colors shown are reproduced by mechanical process and may vary from actual colors of product. Use actual color selectors.

## LIFETIME LIMITED TRANSFERABLE WARRANTY & SERVICE

We proudly stand behind the quality of our products. In the rare event that your product would need service, our factory trained service professionals are solely dedicated to serve you.

## RESEARCH & DEVELOPMENT

Polaris products are scrutinized under extreme weather and structural stresses at the Polaris in-factory testing facility. Our R&D Department ensures that our products feature the latest industry innovations. Top quality and integrity are guaranteed.

## ACCORDING TO THE U.S. DEPARTMENT OF ENERGY,

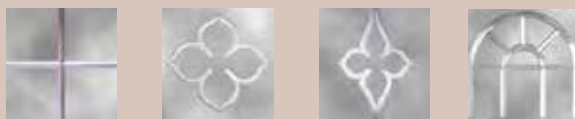
windows could account for 10 to 25% of a home's energy bill. Using ENERGY STAR® windows manufactured with Low-E glass and argon gas to replace your single pane clear glass windows will reduce energy consumption.

## INTERNAL TILT MINI BLINDS\*



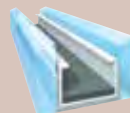
alabaster white clay gold

view glass 3/8" v-groove, interior surface of glass unit pane



view floral view elongated floral view arch view

# ThermalWeld



intercept<sup>®</sup>  
SPACER SYSTEM

## ENERGY EFFICIENT GLASS

Standard EnergySMART® glass features the Intercept® U-shaped steel spacer system. Temperature transfer and condensation are reduced.

EnergySMART upgrades offer stronger resistance to temperature transfer, reduce ultra violet light damage and heat gain. Triple pane glass can reduce exterior sound. Upgrades are ENERGY STAR qualified. Ask for an energySMART brochure.

## MORE GLASS OPTIONS

Bronze or Gray tint  
Krypton fill resists temperature transfer  
Heat Mirror™ SC75

Low-E film fixed between glass panes reduces ultra violet light damage & heat gain. Argon filling in both air spaces resists temperature. Heat Mirror SC75-S adds a Low-E glass coating.

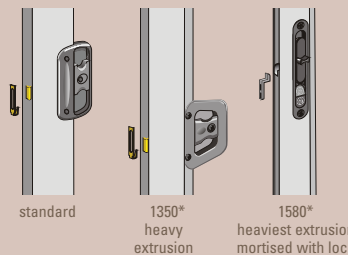
## HANDLE SETS FINISHES

w/ exterior key lock



exterior painted doors - exterior hardware supplied is same color / finish as interior hardware

## SCREEN HANDLES



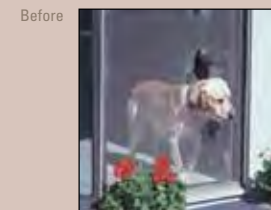
## MORTISED HOOK LOCKS



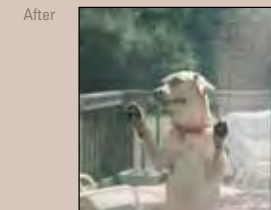
# New

## SCREEN OPTIONS

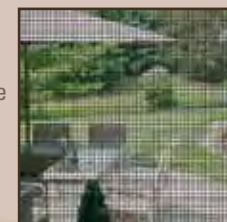
- UltraVUE® Screen Mesh
- Innovative Insect Screen.
- 25% Better Airflow
- 25% Clearer View



- BetterVUE® Screen Mesh
- Better Insect Screen
- 10% Better Insect Protection
- 10% Better Airflow
- 10% Clearer View



- Standard Screen Mesh
- Sight more obstructed
- Less Airflow than UltraVue & BetterVue Screens
- Proven and Reliable



## Pet Screen

- Resists damage by dogs and cats
- Excellent outward visibility
- Made of strong vinyl-coated polyester
- Not harmful to pets
- Easy to install



NAMI Certified



Ask About Our  
GLASS BREAKAGE  
WARRANTY



30% Post Consumer content  
Virgin wood legally harvested from sustainably managed forests

ThermalWeld® & energySMART® are registered trademarks of Polaris® Technologies, OH, USA, 2010 All other trademarks are the property of their respective owners.

\*options

LT256 03/13 6M