



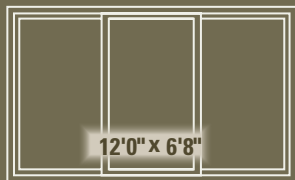
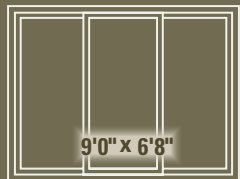
POLARISWINDOWS.COM



THE *Ultra Patio Door* COLLECTION  
PREMIUM VINYL PATIO DOORS

**ENERGY EFFICIENCY • EASE OF OPERATION + OWNERSHIP  
LIMITED LIFETIME WARRANTY**

**STANDARD SIZES**

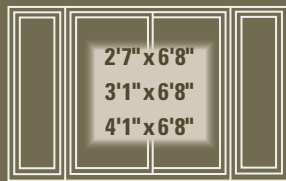


**CUSTOM SIZES**

two panel widths - 36" to 94 7/8"  
three panel widths - 95" to 142 7/8"  
max height - 84"

**SIDE LITES**

standard sizes



custom sizes

width 1'6" to 4'1" max height - 84"



**OPEN & SHUT**

How would you like your door to open as viewed from outside?

Two panel - left or right panel glides

Three panel - center panel glides left or right

*New*

**FEATURES**

Foot operated dead bolt provides an extra lock point for secure partial opening.

Fusion-welding at door panel corners transforms four vinyl extrusions into a strong, one-piece door.

Sloped, aluminum-reinforced sill guides rainwater outside and away.

Safety Glass

Mortised hook lock  
Double or Triple hook option

Smooth gliding, solid-steel, zinc-plated tandem rollers.  
Iridium coating on exposed parts enhances corrosion resistance.



**MORTISED HOOK LOCKS**



2 Point

standard

**ENERGYSMART® GLASS**

Standard EnergySMART®SUPREME<sup>2</sup> glass features the Intercept® U-shaped steel spacer system and Argon gas fill between panes. Temperature transfer and condensation are reduced. EnergySMART upgrades offer stronger resistance to temperature transfer. Ask about ENERGY STAR qualified doors.

**MULTI-POINT LOCK**

**SECURITY\***

Steel hooks automatically lock at three or two points along frame when door contacts frame.



*New*



3-Point Multi-Point

\*options

## PERFECT PATIO DOOR

Our R&D department is vigilant in testing and updating designs and components. Our vinyl formulation retains its smooth surface and color. Vinyl does not transfer cold from outside to inside. Your pristine Polaris® patio door will be energy efficient and maintenance free for a lifetime.

### *New* TRIPLE PANE PATIO DOOR

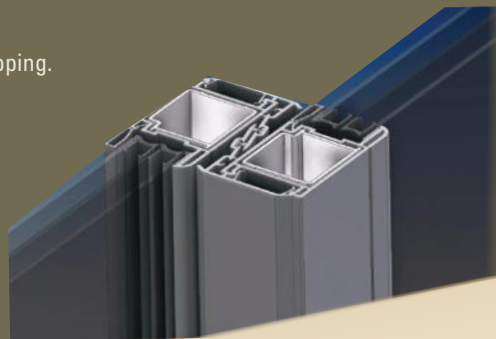
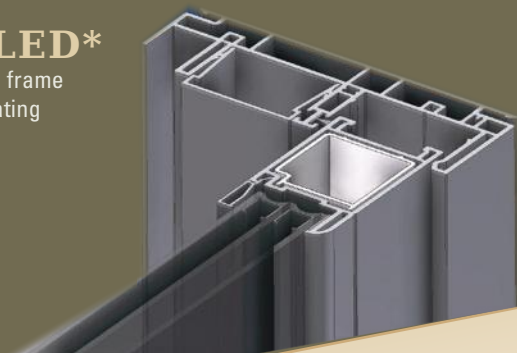
The following sizes are available in triple pane: 5', 6', and 9'. No custom sizes offered.

### FEATURES + BENEFITS

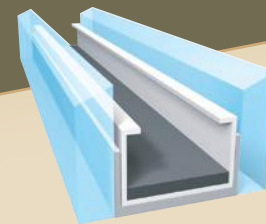
Vertical door panel extrusions are reinforced with aluminum. Door panels meet with Over and Under Interlock and feature double weather-stripping.

### FOAM FILLED\*

Foam filled vertical main frame adds strength and insulating performance



### STAINLESS INTERCEPT SPACER\*



## EXTERIOR PAINT\*20 YEAR WARRANTY against fading, peeling or blistering

Unique, high-performance exterior coating specially formulated for PVC  
Semi gloss finish • Color matched contour internal grids, caulk & coil† options

Crack & impact resistant • Touch-up paint included • Lead time 4-6 weeks

AAMA testing ensures that coating resists strong solvents, heat gain and thermal shock.

† Muntin color may be affected by glass coatings, such as Low-E. Coil not exact match



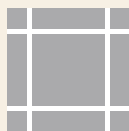


## DECORATIVE GLASS\*

designs



colonial



prairie style



double prairie style



diamond n/a contour or brasses

## INTERNAL TILT MINI BLINDS\*

dust free, kid and pet safe



alabaster



white



clay



gold

## internal muntin styles



smooth



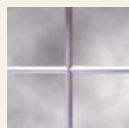
contour



antique brass



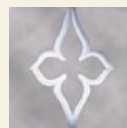
slim line brass



view



floral view



elongated floral view



arch view

## HEAT MIRROR™ \*

Low-E film fixed between glass panes reduces ultra violet light damage & heat gain. Argon gas fill in air spaces resists temperature transfer. Add a Low-E glass coating to further enhance performance.

## MORE GLASS OPTIONS

Bronze or Gray tint  
Krypton fill further resists temperature transfer  
Glass Breakage Warranty

## HANDLE SETS exterior key lock



satin nickel\*

antique brass\*

white, tan or brown coppertone for woodgrains

# UltraWeld® Patio Door

## WINDOW & MUNTIN COLORS\*

### vinyl



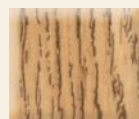
white standard



tan



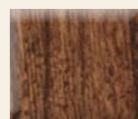
brown



medium oak



dark oak



cherry



coppertone Hardware Woodgrains

### interior woodgrain laminates



New

## SCREEN

UltraVUE® Screen Mesh (A) - Innovative Insect Screen.

- 20% Better Insect Protection
- 15% Better Airflow
- 15% Clearer View

BetterVUE® Screen Mesh (B) - Better Insect Screen

- 10% Better Insect Protection
- 10% Better Airflow
- 10% Clearer View

Standard Screen Mesh (C)

- Sight more obstructed
- Less Airflow than UltraVue & BetterVue Screens
- Proven and Reliable

Strong, extruded aluminum frame in white, tan or brown.

Glides on 1 1/4" steel rollers.

Half screen Standard

Also available in Pet Screen\*

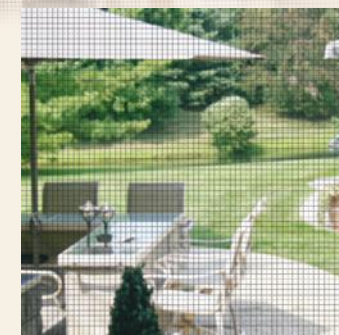
Aluminum Screen Mesh\*

## SCREEN HANDLES

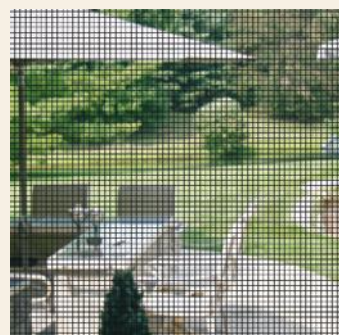


1350 heavy extrusion

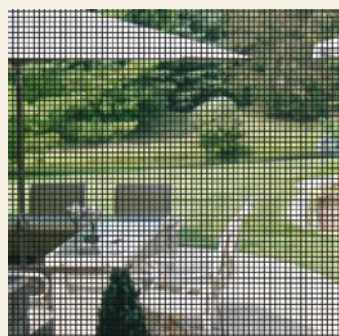
1580\* heaviest extrusion with mortised lock



A



B



C



Made in the USA



30% Post Consumer content  
Virgin wood legally harvested from sustainably managed forests



NAMI Certified

Partner Member